

CTU Presenta

Contesting from VY2ZM “Paradiso” at –35C!!

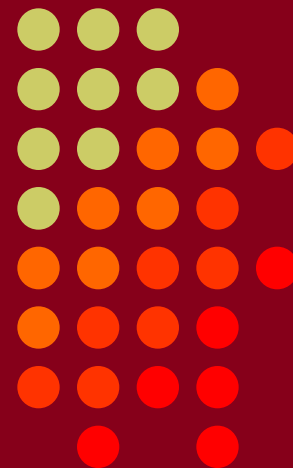
Jeff Briggs K1ZM/VY2ZM

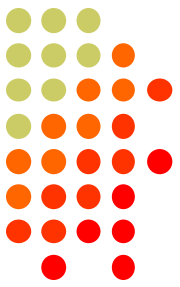
• CTU •
CONTEST
UNIVERSITY

ICOM®



Centro Fiera del Garda
Montichiari (Bs)





Atlantic Canada is Beautiful in Summer! The Ocean is 21C





**Winter is tough on antennas.
It is hard to stay on the air...
Careful design is a MUST!!!**



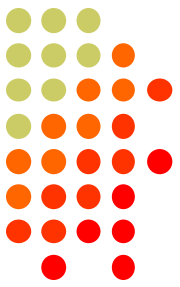
Ocean Freezes Solid at -35C



A “Milano Taxi” is called a Snowmobile with a sled!!

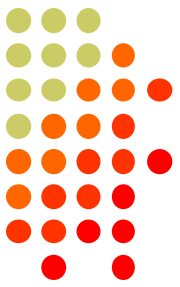


We built a house and antennas





160M Phased Array – Aug 2001

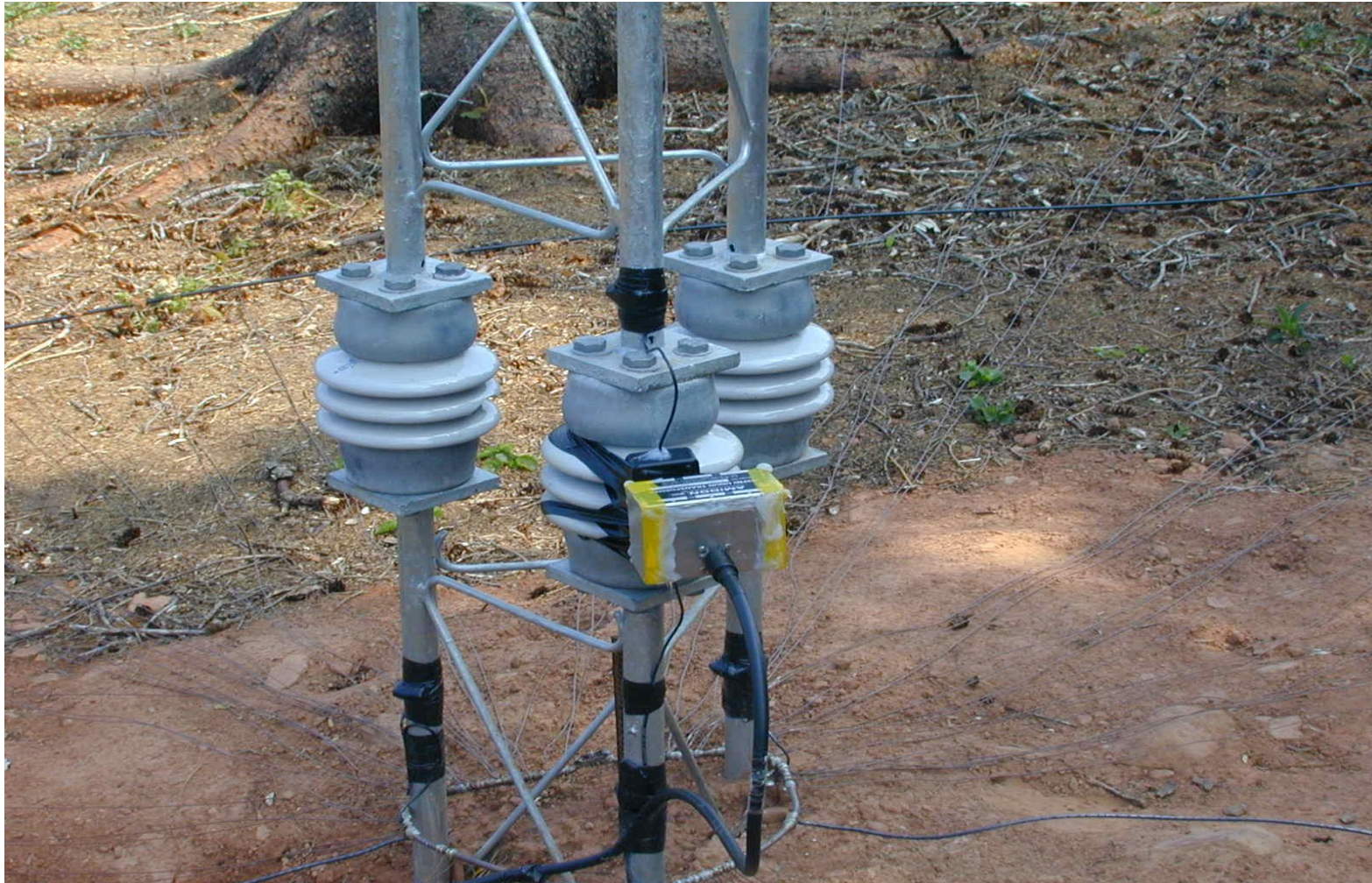


◦ GTU ◦

CONTEST
UNIVERSITY

ICOM®

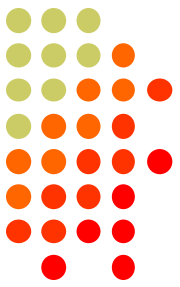
Insulated Base for Radiators





Testing 160M Antenna at Night



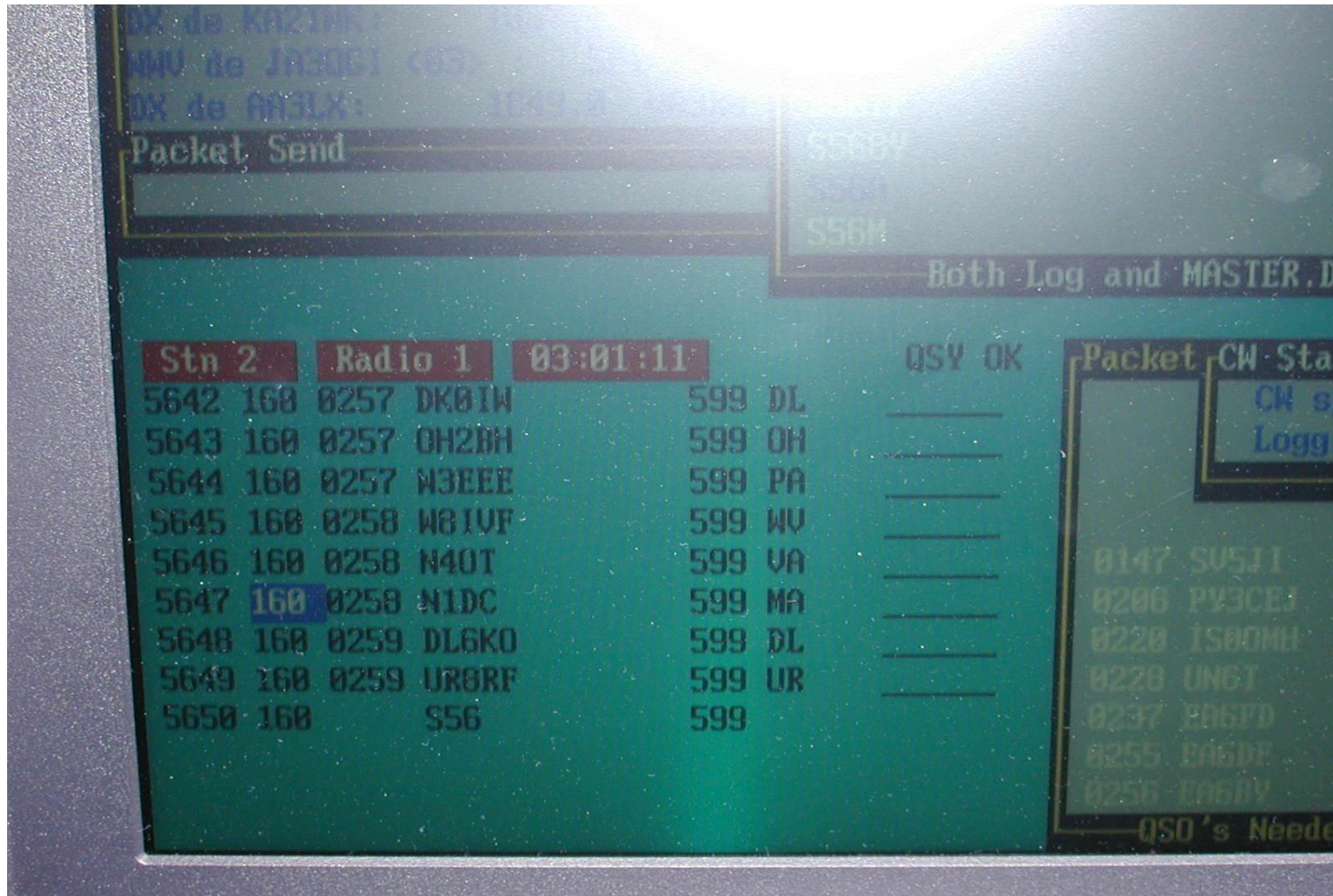


First 160M Contest – Jan 2002





Contesting is FUN from VY2...

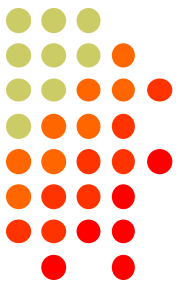


◦ CTU ◦

CONTEST
UNIVERSITY

ICOM®

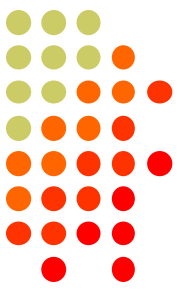
Contesting Location: Salt Water is Good!! Bad For Ants



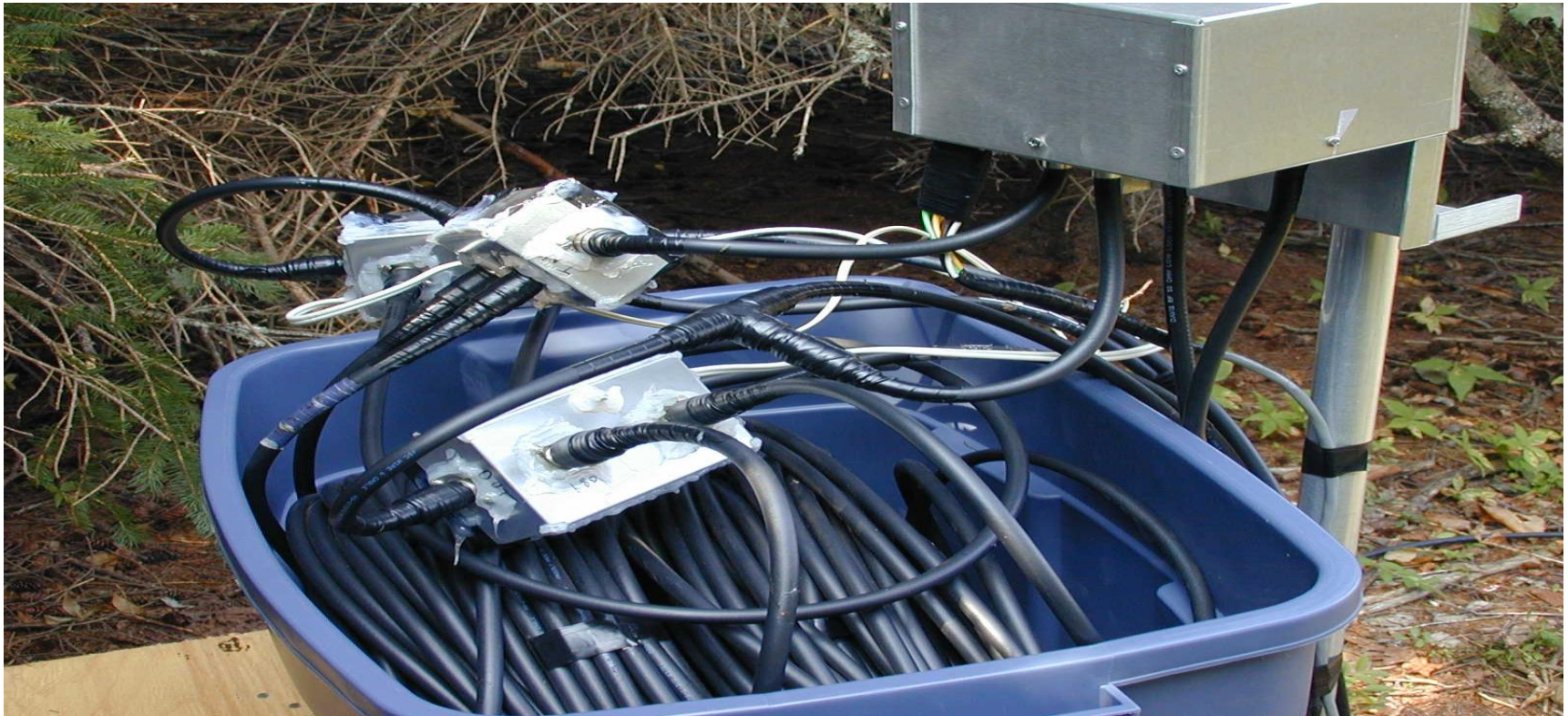
◦ CTU ◦

CONTEST
UNIVERSITY

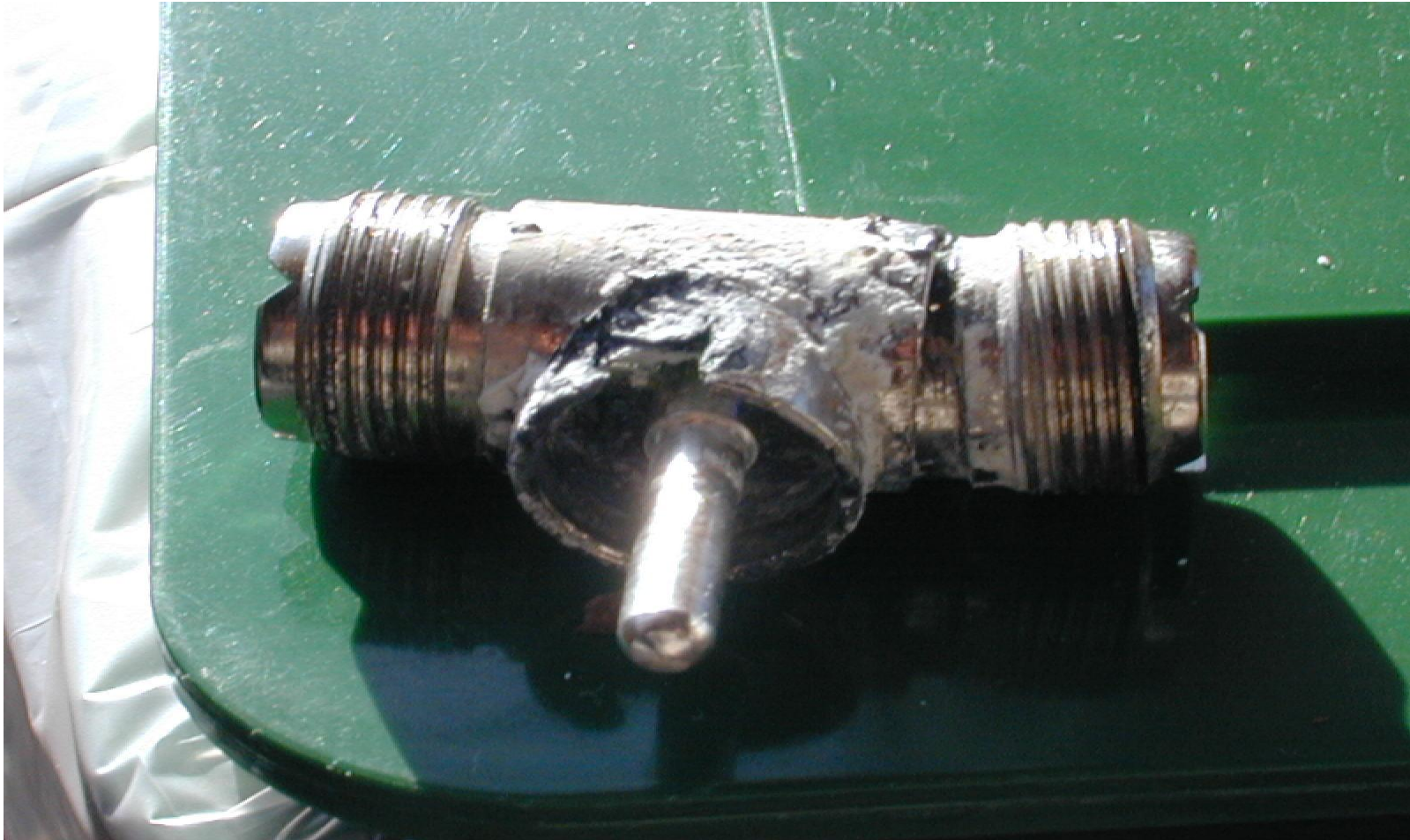
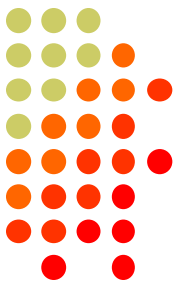
ICOM[®]



PL259's are everywhere!! Serious Contesting Demands Almost 100% Reliability....



Even Good Engineering Fails!



Wind/Salt Spray Can Kill You..



◦ CTU ◦

CONTEST
UNIVERSITY

 **ICOM**[®]

Another Look at the Damage..



◦ CTU ◦

CONTEST
UNIVERSITY

 **ICOM**[®]



Use Lots of Tape and Sealant



◦ CTU ◦

CONTEST
UNIVERSITY

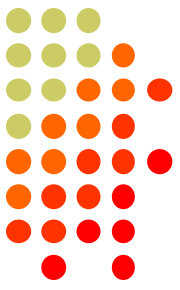
ICOM[®]



Protect Your Tower!

Sidemount Lower Ants Right!





Director Side of Yagi Showing Sidemount to 3rd Leg of Tower





Double Truss Long Boom Yagis with Phillystran Rope Tape All Boom and Ele Joints





6EL OWA Yagi Reflector Side Showing Truss and Ele Taping

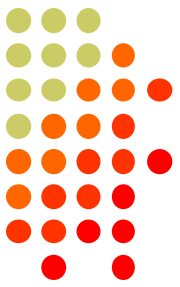




Keep It All Working 100% - Make Your PL 259's Correctly!

- Many ways to do this – K3LR method good!
- VY2ZM Method Different – but also good
- An emergency PL259 Up the Tower is possible using K1ZM methodology
- A solderless emergency PL259 is possible
- Always tape PL259's with plenty of black tape
- Pull the tape hard as you tape joints
- Seal joints 4x and go past PL by 10cm min

PL259's the VY2ZM Way-Easy!

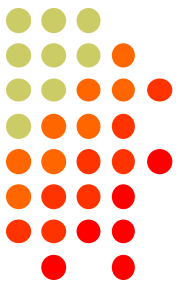


◦ GTU ◦

CONTEST
UNIVERSITY

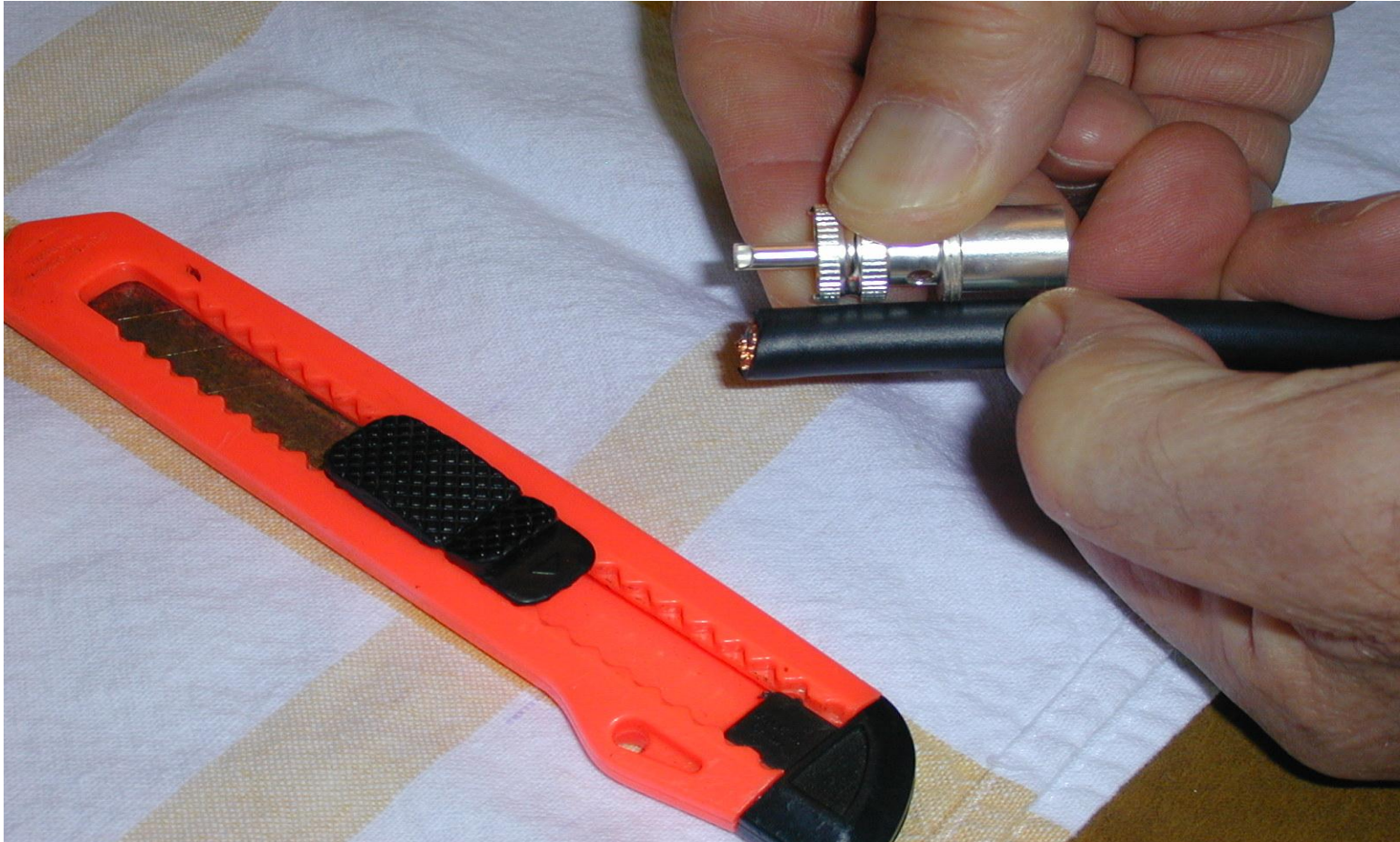
ICOM®

Start with Razor Knife

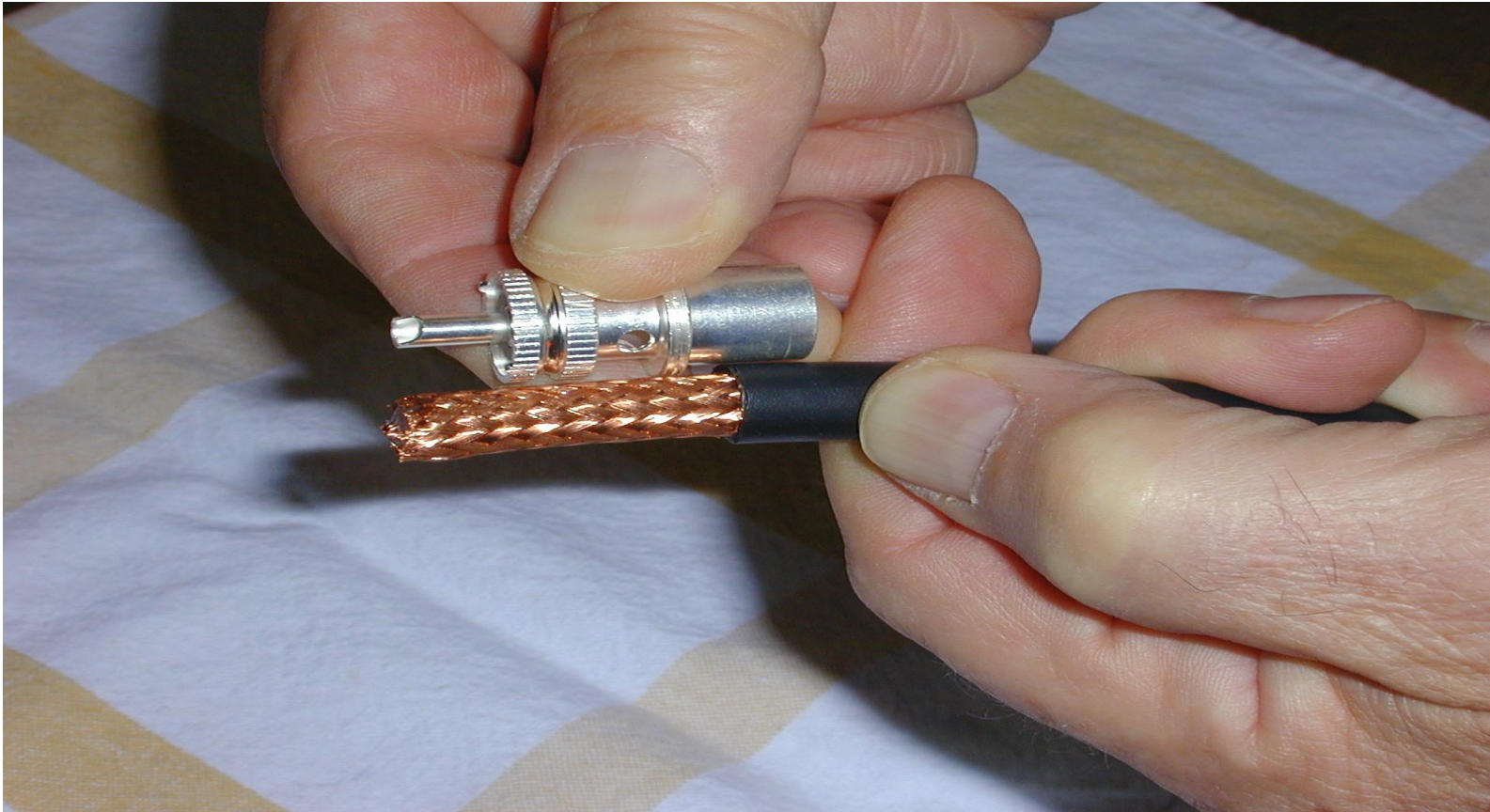




Note that Rear of PL259 Extends 1cm Past Left Thumb

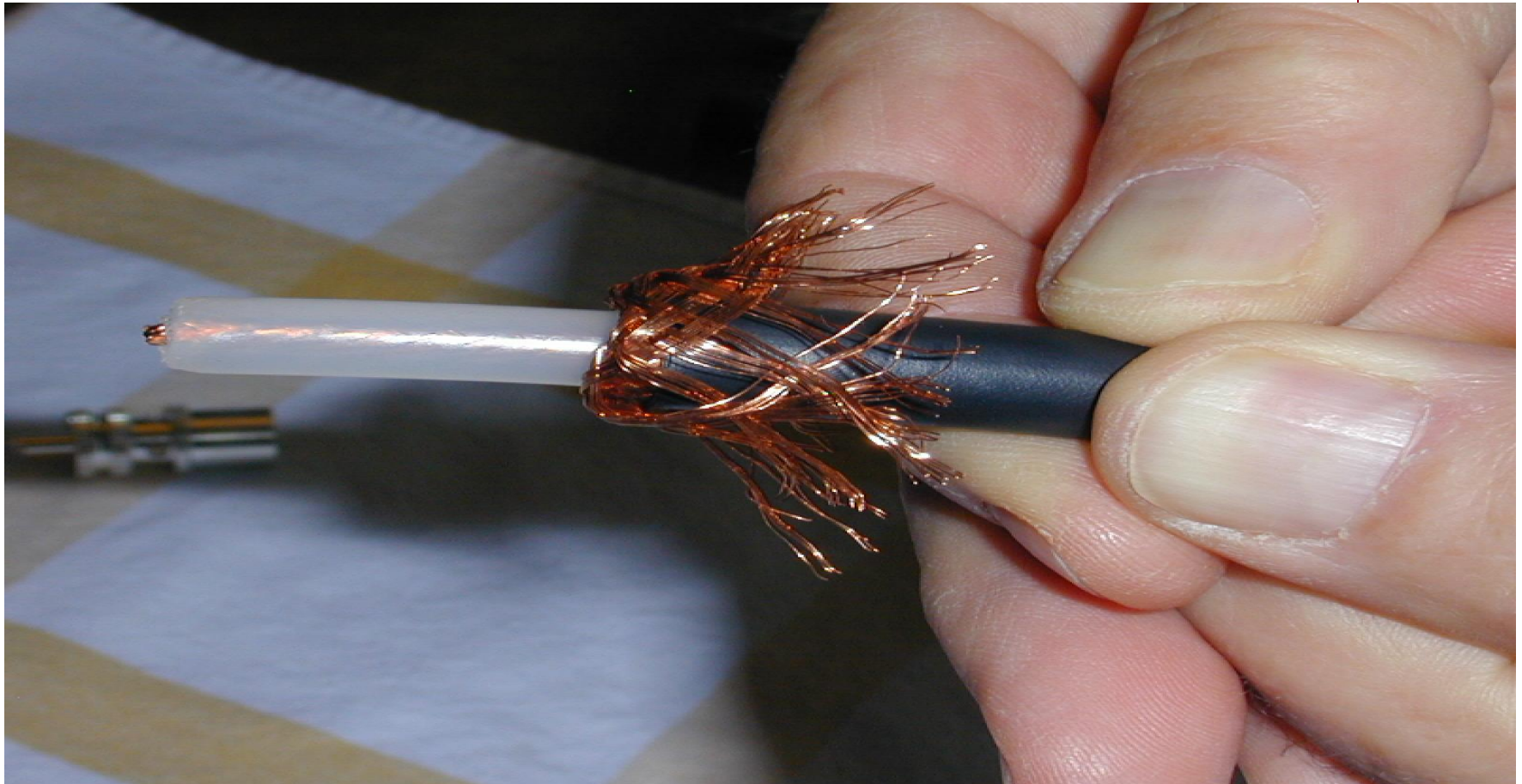


Coax Black Jacket is Cut So Rear of PL259 is 1cm Past Cut





Prepare Copper Braid for Cut





Trim Coax Braid with Scissors

Note PL259 Is Past Coax Braid



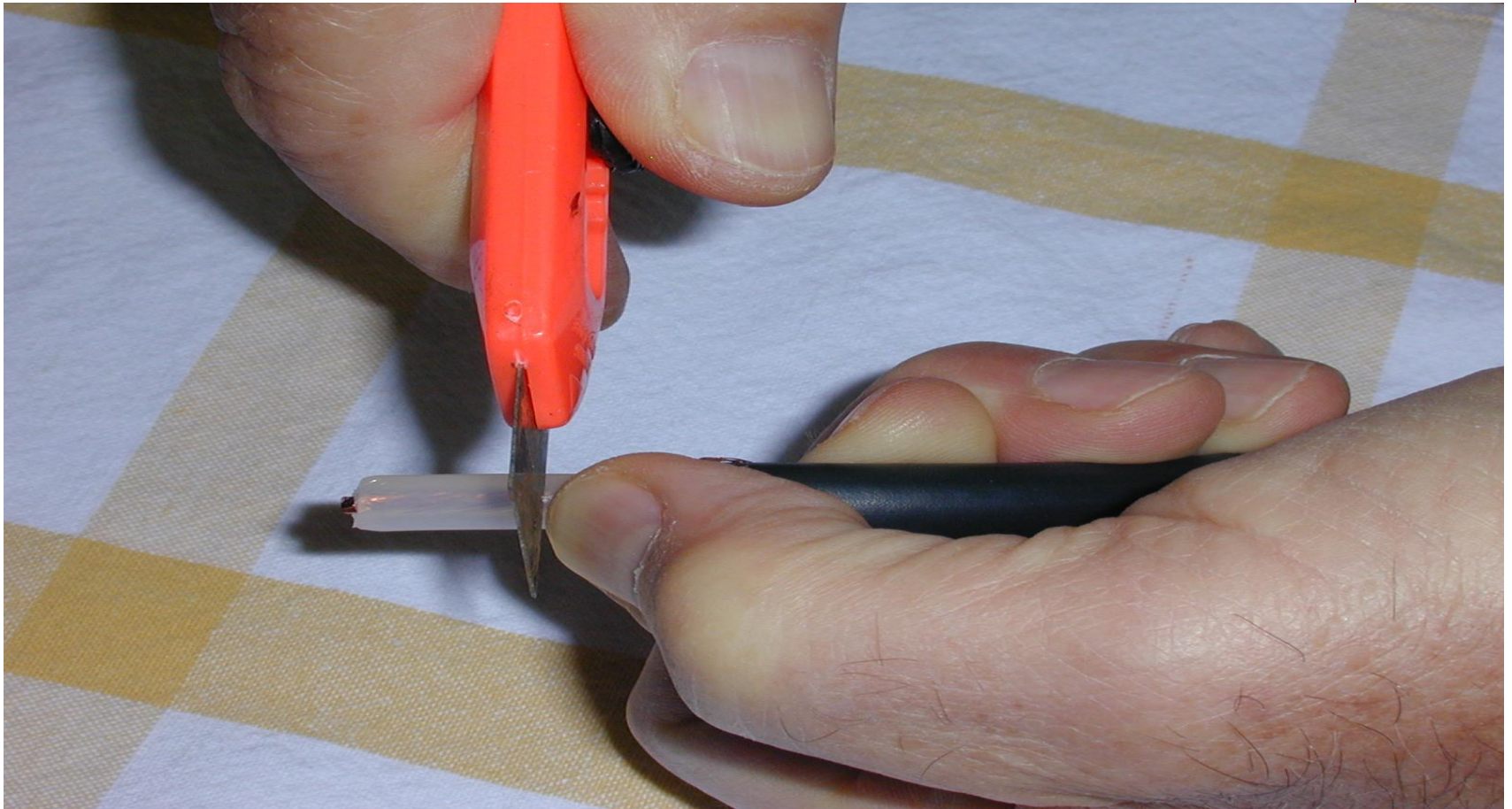


Note Position of Left Thumb and PL259 – Thumb Marks Cut and is Aligned w/ Inside of PL





Hold Thumb Mark as Before. Cut Poly Dielectric with Knife



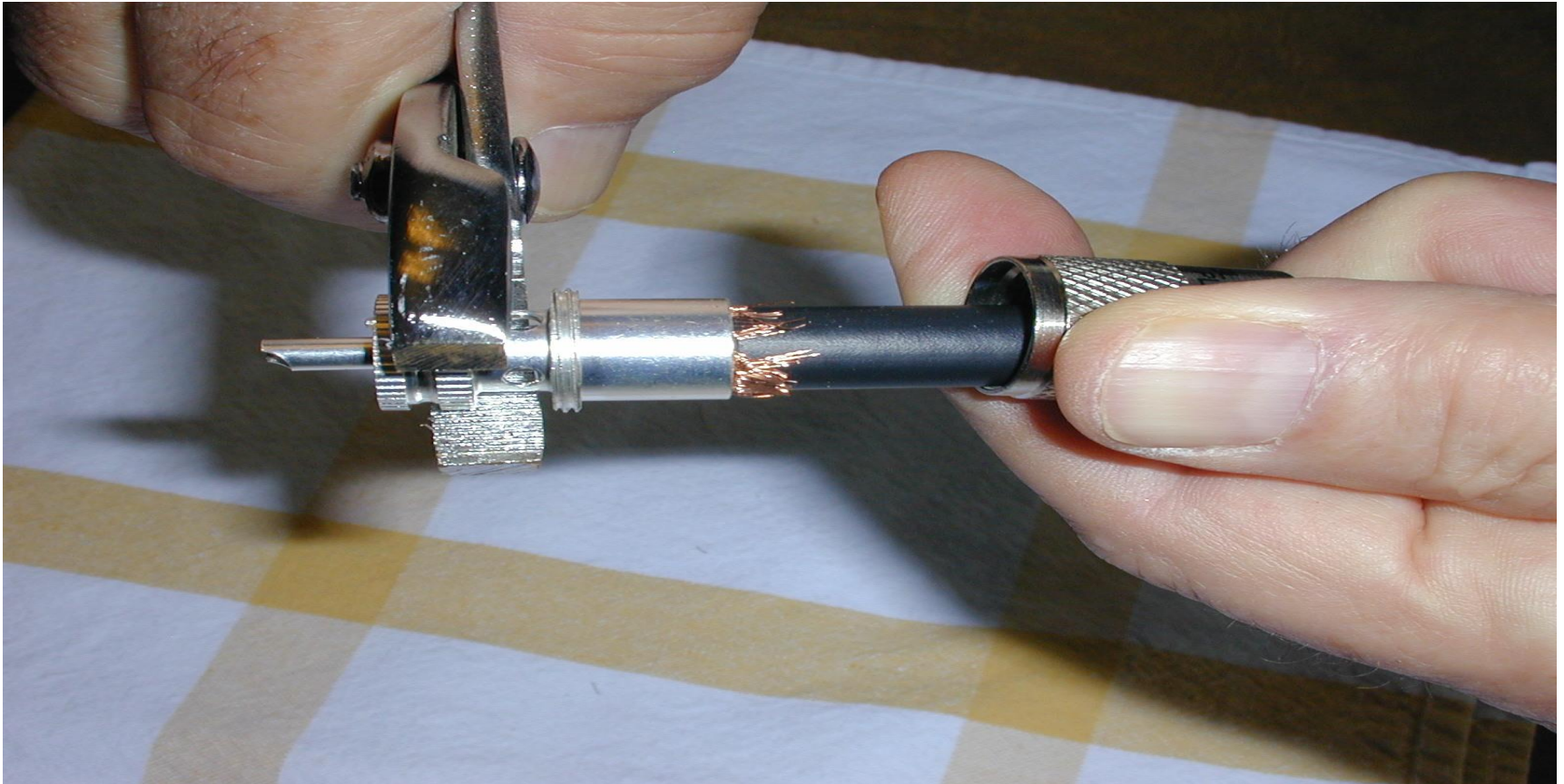
Coax is Ready for PL259

Remember to Put Outer PL on!

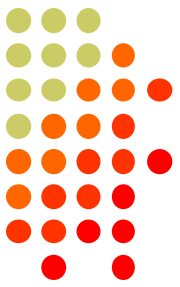




Turn Pliers CLOCKWISE to Screw PL259 Threads on Coax



Use Diagonal Cutters to Trim Any Excess Wire from PL Tip

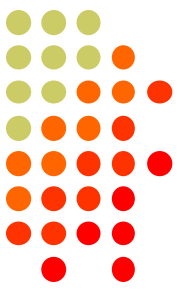




Time to Solder PL259 Tip

Note that Braid is Not Soldered





PL259 is Weathertight – Note Copper Braid is Under PL259 Rear to Make Pressure Fit!





A Small Butane Torch is Perfect for Remote Soldering





**Remember – Your Outdoor
Connections Keep You On the
Air! Thanks for Coming and
Hope to CU in the Next Tests!**

